

My simple Log Dogs.
(Log holders)

Board stop



I have been using these log holders on my mill for three seasons. They are simple to build and easy to use. Before making the brackets I was slabbing smaller logs, as the logs got bigger I needed a way to position the larger logs for my 18" bar. I am also able to hold the logs to make finished boards.

Things to note:

- 1- There is a right and left side holder. The one in the picture is a right side because of the position of the cinch bolt and board stop.
- 2- 3/4" Black iron pipe slides nicely inside of a 1" black iron pipe. (Future projects)
- 3- Black iron pipe is mild steel.
- 4- The board stop is for cutting the last board. The bracket will be laid down.
- 5- My cinch bolts Thread into nuts welded over a hole. (Keep It simple)
- 6- Cinch bolts are 3/8" grade 5.
- 7- I can comfortably handle a 20 inch log with these brackets.

List of materials
(For left and right brackets)

8' - 3/4" Black iron pipe. OD 1.060". ID .830- Frame.

16" - 1" Black iron pipe. OD 1.320". ID 1.090- Pivot points.

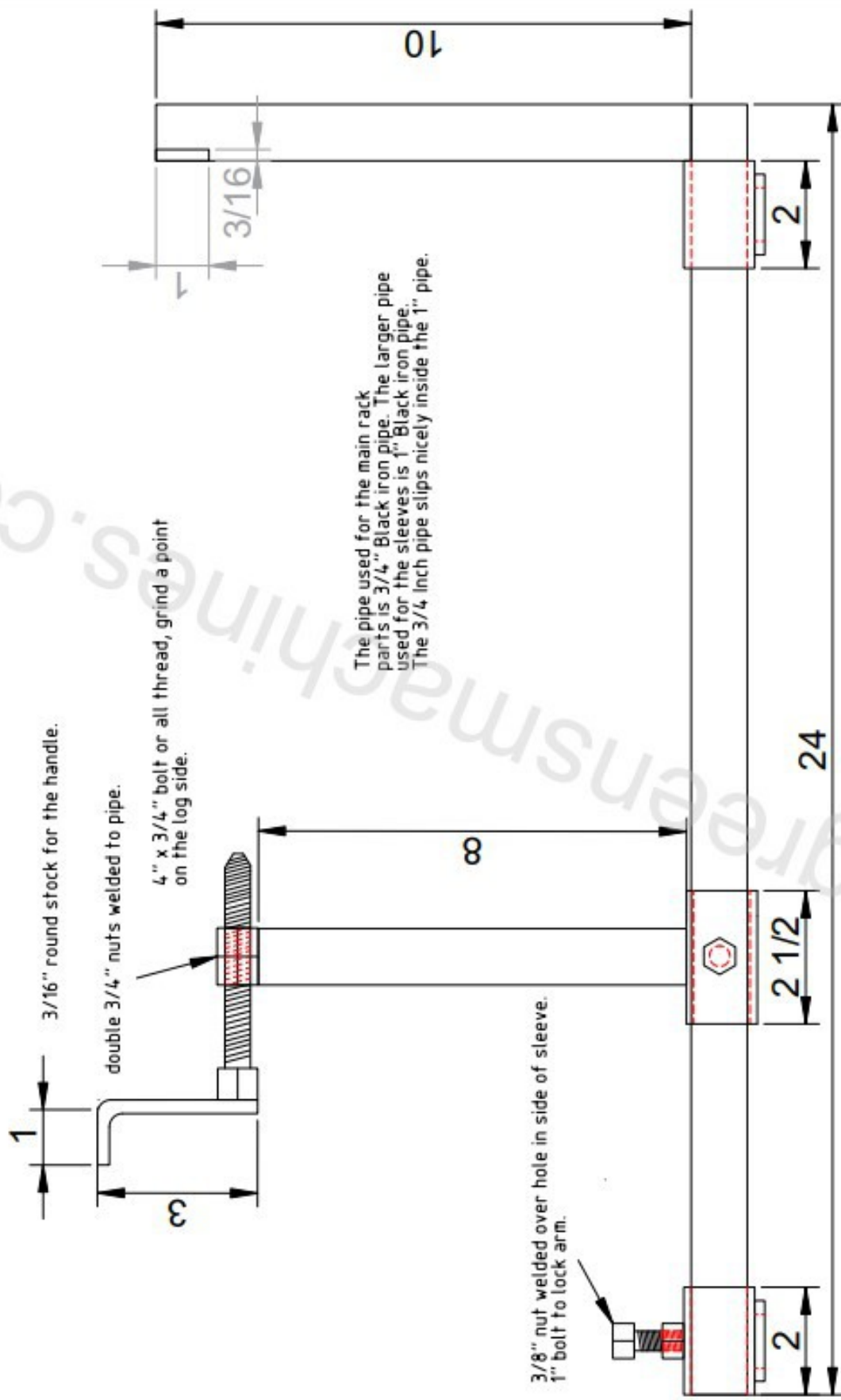
2 - 4" x 1/2" Grade 5 - 1/2" bolts . I prefer 13 Threads per inch. Threaded all the way. I pointed the end that goes into the log. For cinching logs in place.

4- 1/2 " Nuts to match the bolts. I welded 2 together to give a steadier clamping.

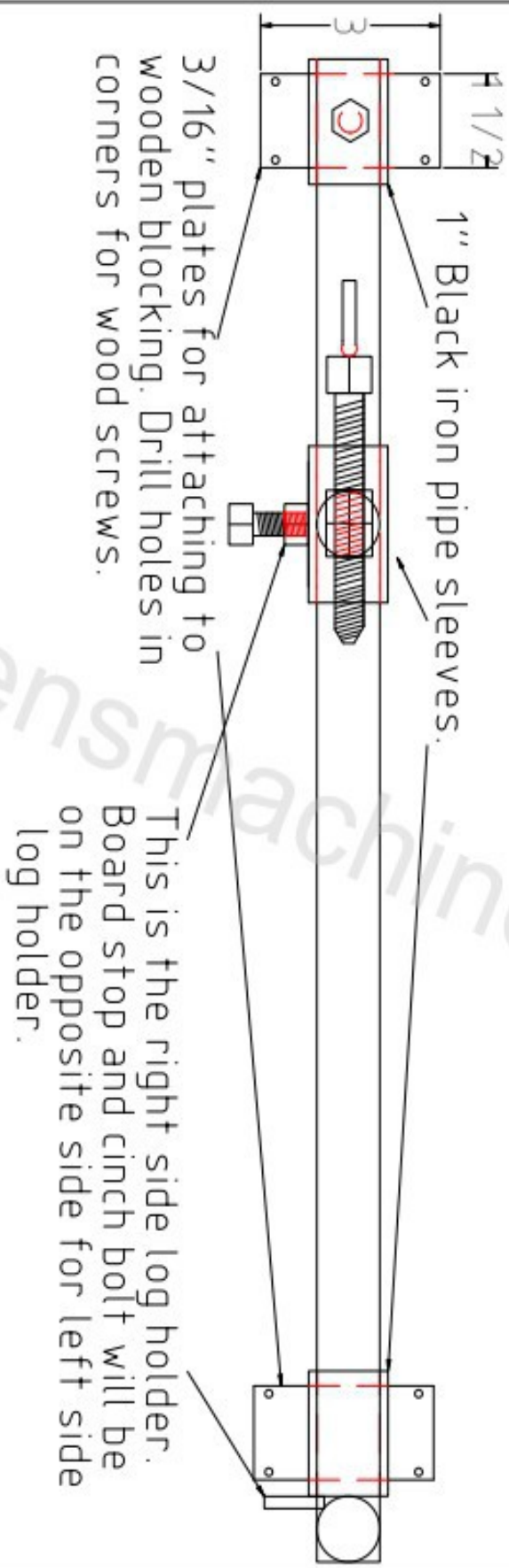
1- 9" -3/16" Round stock to make handles for log cinchers. (I made up that name)

1- 16" x 3" x 3/16" steel plate for Mounting plates and board stop.

4 - 1" x 3/8" Nuts and bolts. Nuts will be welded over hole in sleeve to lock frame.



The pipe used for the main rack parts is 3/4" Black iron pipe. The larger pipe used for the sleeves is 1" Black iron pipe. The 3/4 inch pipe slips nicely inside the 1" pipe.



Log holder top view
 thegreensmachines.com

The plans are drawn as it was built and tested.

